



# Logistics Plan for Re-Opening - March 2021

## JUNIOR ACADEMY

### Arrival at school

Your co-operation is asked for with the following:

#### Arrival:

- Gates will open at 8.30am
- Parents will queue on the appropriate coloured line associated with their class, always maintaining social distancing and keeping your child close to you at all times.
- At 8.40, classroom doors will open, and teachers will welcome and sanitise the hands of the pupils before entering the classroom.
- Pupils in the prefabs will be greeted at the “white line” where a teacher or SNA will sanitise their hands before they are escorted to their classrooms.
- SET’s/SNA’s will remain on yard after this time to ensure all pupils are escorted to their particular classes.

(see Fig. 1)

<b>Entrance and Exit Points Junior Academy</b>	<b>location</b>
<b>Front Door, Main Building</b>	<b>A</b>
<b>Back Door, Main Building</b>	<b>B</b>
<b>Prefab 1 prefab entry Door</b>	<b>C</b>
<b>Prefab 2 prefab entry door</b>	<b>C</b>
<b>Prefab 1 fire exit door</b>	<b>D</b>
<b>Prefab 2 fire exit door</b>	<b>E</b>
<b>Special Education Prefab</b>	<b>F</b>

<b>Teacher</b>	<b>Class</b>	<b>Entrance &amp; Exit Point</b>
<b>Mrs. Murphy, room 1</b>	<b>Jnr Inf</b>	<b>A</b>
<b>Mrs. Boyle, room 4</b>	<b>Jnr Inf</b>	<b>B</b>
<b>Ms. Crowley, prefab 1</b>	<b>Jnr Inf</b>	<b>D</b>
<b>Ms. Lehane, prefab 2</b>	<b>Jnr Inf</b>	<b>C</b>



# Logistics Plan for Re-Opening - March 2021

## Yard: JUNIOR ACADEMY

The Yard will be split in four with all Junior Infant classes on yard during each break.

- All classes will have first break from 10.45-11.00 (Eating inside class) and 11.00-11.15 (on yard) and second break from 12.45-12.55(on yard)
- Teachers will complete a full day of yard duty on their designated day. SNAs will be on yard at every break.

## Junior Academy

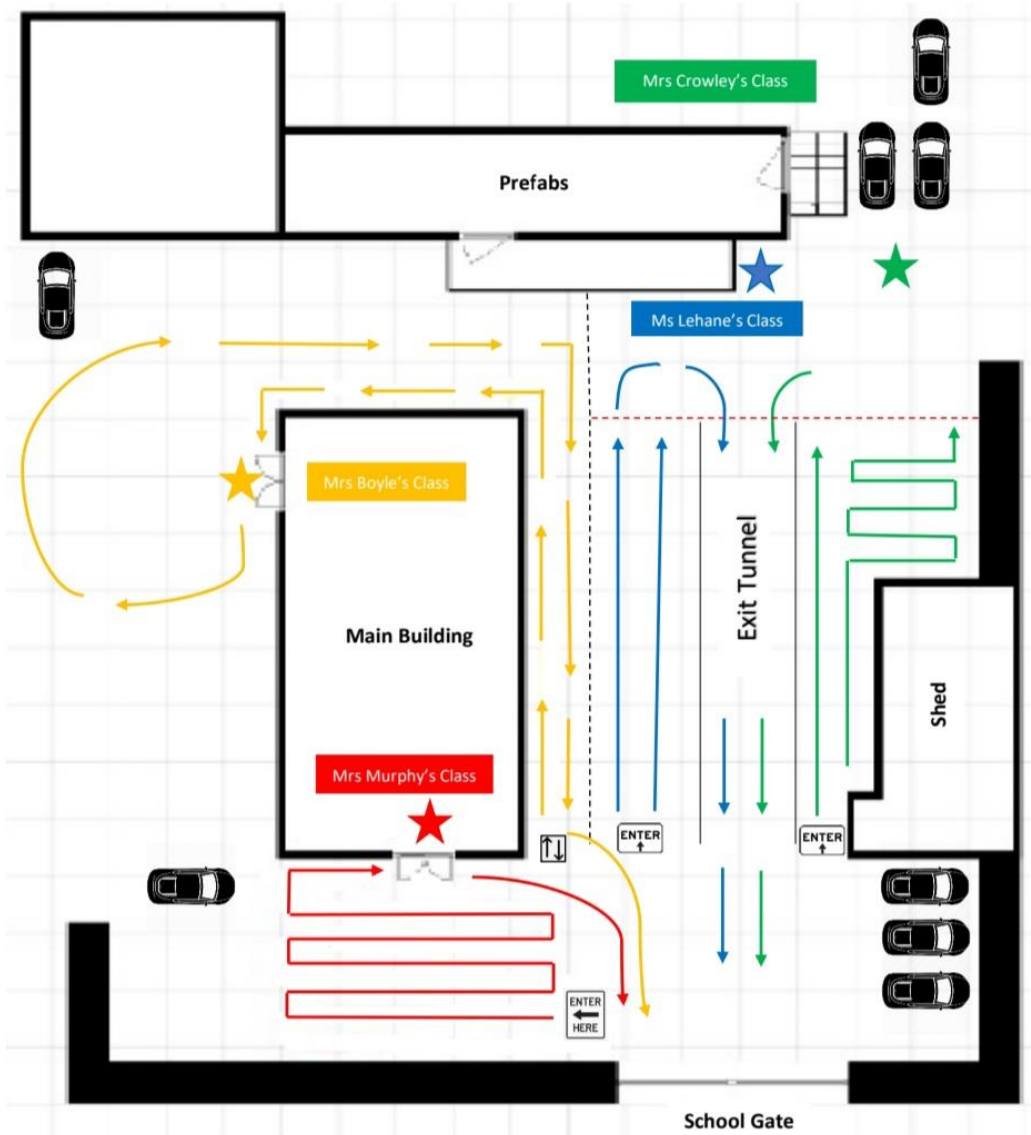
### End of School Day -

- **These systems will apply, rain or shine, so please make sure your child comes to school prepared for the weather.**
- Please adhere to social distancing rules
- Please assist us by collecting on time. Thank You!

### Dismissal:-

- All classes will be lined up inside the buildings and escorted to the exits where they will be dismissed individually to their parents/guardians or nominated adult.
- Mrs Murphys Class will be dismissed from the Front Door.
- Mrs Boyle's Class will be dismissed from the back door of the Main Building.
- Ms Lehane's parents will line up at a designated point on the yard and once called, will walk towards the white line, collect their child, and escort them off the school grounds.
- Ms Crowley's parents will line up at a designated point on the yard and once called, will walk towards the white line, collect their child, and escort them off the school grounds.

Fig. 1



- ↑ Collection Lines for Mrs Murphy's Class
- ↑ Collection Lines for Ms Lehane's Class
- ↑ Collection Lines for Mrs Boyle's Class
- ↑ Collection Lines for Ms Crowley's Class

----- Parents/Guardians wait at this line until called by the teacher to walk forward and collect your child.

★ ★ ★ ★ Exits from where your child will be welcomed and dismissed.



# Logistics Plan for Re-Opening - March 2021

## Collection of Children during the School Day

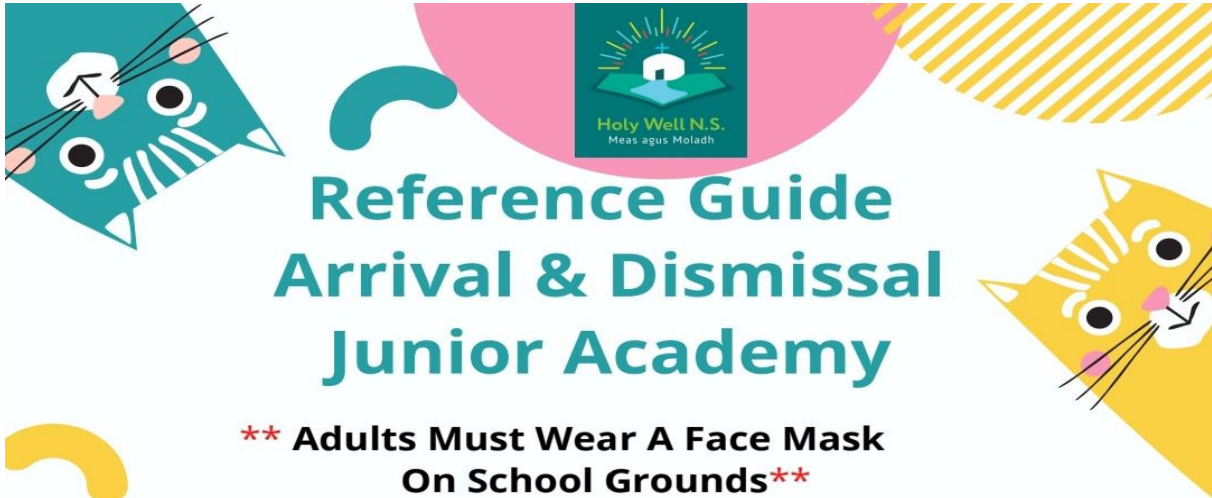
If an adult has to collect a child during the course of the school day, the following arrangements will apply:

- **You must inform the teacher before-hand by email or the school app**, or contact the school office on 021-4371875, as access to the school is prohibited without prior appointment.

### Isolation Room:

- The current staffroom will be moved to room 2.
- The current staffroom will then be used as the isolation room.

**Note:** *This is a working document and will be updated, as appropriate, to reflect updated advice or required changes to routines within the school. All changes to timetables, routines and operational procedures are temporary in nature and are subject to change.*



## Reference Guide Arrival & Dismissal Junior Academy

**\*\* Adults Must Wear A Face Mask  
On School Grounds\*\***

### Arrival:-

- All teachers will be on yard at 8.30am
- Gates will open at 8.30am
- Parents will queue on the appropriate coloured line associated with their class, always maintaining social distancing and keeping your child close to you at all times.
- At 8.40, classroom doors will open and teachers will welcome and sanitise the hands of the pupils before entering the classroom.
- Pupils in the prefabs will be greeted at the "white line" where a teacher or SNA will sanitise their hands before they are escorted to their classrooms.
- SET's/SNA's will remain on yard after this time to ensure all pupils are escorted to their particular classes.

### Dismissal:

- All classes will be lined up inside the buildings and escorted to the exits where they will be dismissed individually to their parents/guardians or nominated adult
- Mrs Murphy's Class will be dismissed from the Front Door
- Mrs Boyle's Class will be dismissed from the back door of the Main Building
- Ms Lehane's parents will line up at a designated point on the yard and once called, will walk towards the white line, collect their child and escort them off the school grounds.
- Ms Crowley's parents will line up at a designated point on the yard and once called, will walk towards the white line, collect their child and escort them off the school grounds.

**AVOID GATHERING ON/OUTSIDE SCHOOL GROUNDS.  
PLEASE ASSIST US BY DROPPING AND COLLECTING ON TIME.**

